



# Waste Aware Edinburgh: Factsheet 19



## Metal Recycling

By recycling your metal you are helping us to divert over 1,800 tonnes of metal every year from landfill.

### Did you know?

- Every year, Britain's recycling industry recovers well over 10 million tonnes of metals that would otherwise be sent to landfill.
- The iron and steelmaking industry is the largest consumer of recycled metals. In the UK, steelworks use almost 7 million tonnes of recycled metal a year in making about 18 million tonnes of new steel.
- For every tonne of steel that we recycle in Britain we save 1.5 tonnes of iron ore, 0.5 tonnes of coal and 40% of water usage – natural resources that would otherwise be used to make steel.



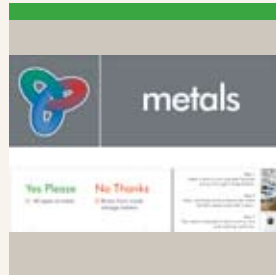


# Metal Recycling

## 1 Collection from Community Recycling Centre

You can recycle all types of metal at your local Community Recycling Centre including:

- Scrap metal
- Metal car parts
- Metal cabinets
- Metal bedframes and headboards
- Damaged cookers and white goods

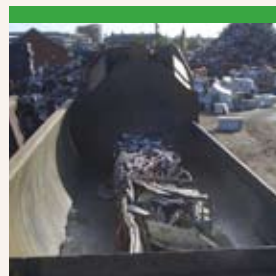


A collection vehicle transports the scrap metal from the Community Recycling Centre to a Metal Recycling Facility. The metal is sorted into different types, such as iron, steel and non-ferrous metals. High grade metal at this stage is ready for shipping/delivery to the steel works (see point 4).

## 2 Compression in the Shear/Baler



A mechanical material handler loads the lower grade materials into a Shear/Baler.



The materials are then enclosed in the Shear/Baler and compressed into a metal log in order to make it more economical for transportation.

## 3 Shredded in the Fragmentiser

Lower grade metal logs are transported to a metal Fragmentiser, which weighs several hundred tonnes. Here, revolving anvils pulverise the metal into fist-sized pieces. The fragmented metals are then shipped to steel works factories either in England, Spain, or as far away as the Far East.



## 4 Melting



At the steel works, the metal is heated to extremely high temperatures and melted down. The molten metal is then remoulded into slabs and sheets.

## 5 Distributed to manufacturers

The metal is recycled into items such as cars and washing machines ready for you to buy.



## 1 Collection

Then it's back to stage one and the recycling process starts all over again.